

Courtesy Of Margo Kaufmann Of MaxWell Polaris

\$284,450 - 48 26409 Twp 532a, Rural Parkland County

MLS® #E4233097

\$284,450

0 Bedroom, 0.00 Bathroom,
Rural on 1 Acres

Spring Meadow Estates, Rural Parkland County, AB

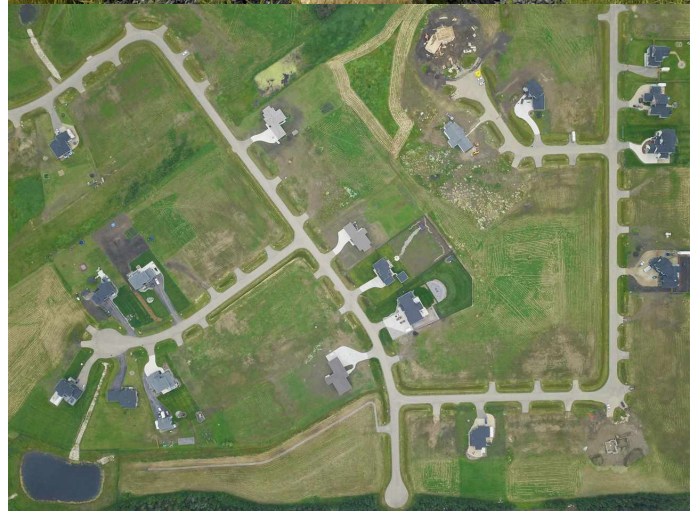
Welcome to SPRING MEADOWS ESTATES located only 10 minutes west of Edmonton & east of Spruce Grove. COUNTRY LIVING AT ITS BEST!! City Water & Sewer, High Speed Internet - you have it all. BUY BEFORE PRICE INCREASE! Lot 48 is .96 of an ACRE - rectangular shaped lot - South Facing backyard! BACKS ON TO TREE LINE. OVER 50% SOLD. Variety of lots to still choose from: walkouts, flat lots, & even lots backing on to Natural Reserve. IT IS SIMPLY YOUR CHOICE! Choose a lot that fits the home you want to build! Looking for a builder, we can assist you or you can choose your own. Developer FINANCING PKGES available. Walking distance to Lois Hole Provincial Parks Edmonton Springs and Deer Meadows Golf Courses. GST may apply.

Essential Information

MLS® #	E4233097
Price	\$284,450
Bathrooms	0.00
Acres	0.96
Type	Rural Land/Vacant Lot
Status	ACTIVE

Community Information

Address 48 26409 Twp 532a



Area	Rural Parkland County
Subdivision	Spring Meadow Estates
City	Rural Parkland County
County	ALBERTA
Province	AB
Postal Code	T7X 0W7

Interior

Bedrooms on Main Level N

Exterior

Exterior Features Backs Onto Park/Trees, Flat Site, Golf Nearby, Private Setting, No Back Lane

Lot Description 44.8 X 88 Metres

Listing information last updated on June 13th, 2021 at 12:16pm MDT