

Courtesy Of Margo Kaufmann Of MaxWell Polaris

## **\$335,000 - 57 26409 Twp 532a, Rural Parkland County**

MLS® #E4285767

**\$335,000**

0 Bedroom, 0.00 Bathroom,  
Rural on 1 Acres

Spring Meadow Estates, Rural Parkland County, AB

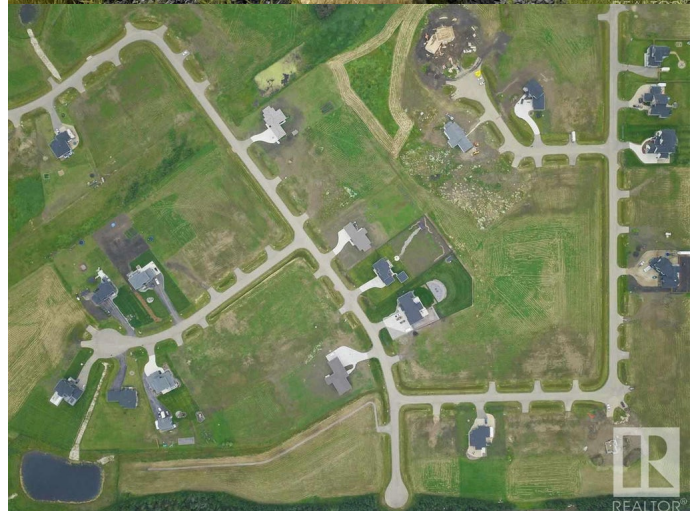
Welcome to SPRING MEADOWS ESTATES located only 10 minutes west of Edmonton & east of Spruce Grove. COUNTRY LIVING AT ITS BEST!! City Water & Sewer, High Speed Internet - you have it all. Lot 57 is .96 of an ACRE - WALKOUT PIE shaped LOT with North-West facing backyard! OVER 75% SOLD. . Variety of lots to still choose from: walkouts, flat lots, & even lots backing on to Natural Reserve. IT IS SIMPLY YOUR CHOICE! Choose a lot that fits the home you want to build! Looking for a builder, we can assist you or you can choose your own. Developer FINANCING PKGES available. Get in the Special Discounts available for a limited time only!! Walking distance to Lois Hole Provincial Parks Edmonton Springs and Deer Meadows Golf Courses. GST may apply.

### **Essential Information**

MLS® #	E4285767
Price	\$335,000
Bathrooms	0.00
Acres	0.96
Type	Rural Land/Vacant Lot

### **Community Information**

Address	57 26409 Twp 532a
Area	Rural Parkland County



Subdivision Spring Meadow Estates  
City Rural Parkland County  
County ALBERTA  
Province AB  
Postal Code T7X 0W7

**Interior**

Bedrooms on Main Level N

**Exterior**

Exterior Features Not Fenced, Not Landscaped, Private Setting, Sloping Lot, See Remarks

Listing information last updated on September 27th, 2022 at 3:32pm MDT